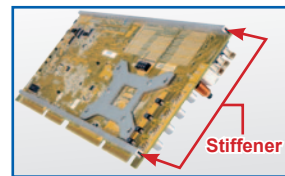
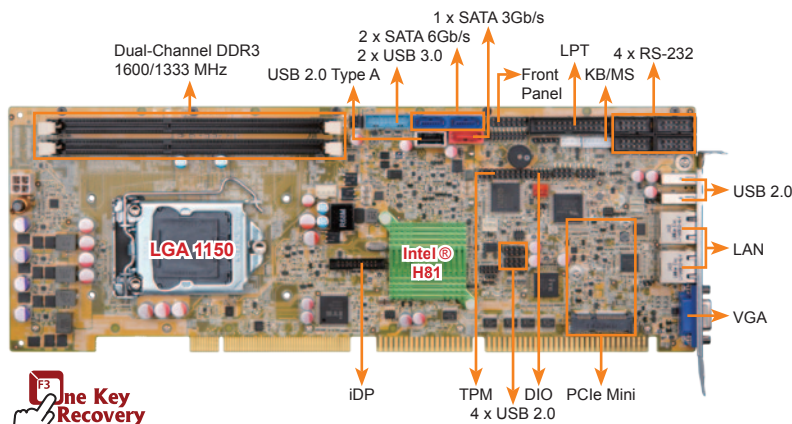


# WSB-H810

Full-size PICMG 1.0 CPU card supports LGA1150 Intel® Core™ i7/i5/i3, Pentium® and Celeron® CPU per Intel® H81, DDR3, VGA/iDP, Dual Intel® GbE, USB 3.0, SATA 6Gb/s, PCIe Mini, mSATA, RS-232, HD Audio and RoHS

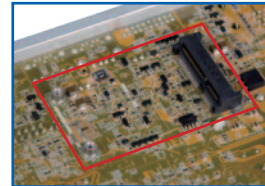


**New**



**Enhance stability**  
Strengthen the mechanism  
Prevent PCB bending

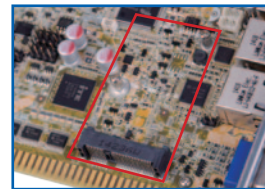
## PCIe Mini & mSATA connector



Support PCIe Mini & mSATA



◀ mSATA



Top-side PCIe Mini connector supports PCIe signal for half-size or full-size PCIe device. Solder-side PCIe Mini connector supports SATA 3Gb/s signal for full-size mSATA.



◀ PCIe Mini



## Specifications

- ◆ CPU  
4th generation LGA1150 Intel® Core™ i7/i5/i3, Pentium® or Celeron® processor supported
- ◆ Chipset  
Intel® H81
- ◆ Memory  
Twp 240-pin 1600/1333MHz dual-channel DDR3 & DDR3L SDRAM unbuffered DIMMs support up to 16GB
- ◆ BIOS  
UEFI
- ◆ Graphics  
Intel® HD Graphics Gen 7.5 supports DX11.1 and OpenCL 1.2, OpenGL 3.2 Full MPEG2, VC1, AVC Decode
- ◆ Display Output  
Dual independent display  
VGA (up to 1920x1200 @ 60 Hz)  
iDP interface for HDMI, LVDS, VGA, DVI, DP (up to 3840x2160 @60 Hz)
- ◆ Ethernet  
LAN1: Intel® I217-LM Ethernet Controller  
LAN2: Intel® I211-AT Ethernet Controller
- ◆ Audio  
7.1 channel HD Audio supported by IEI AC-KIT-892HD kit
- ◆ External I/O Interface  
2 x RJ-45  
2 x USB 2.0  
1 x VGA
- ◆ Internal I/O Interface  
1 x IR (1x5 pin) 1 x USB 2.0 (180 degree type A)  
1 x KB/MS (1x6 pin) 4 x USB 2.0 (2x4 pin, P=2.54)  
1 x LPT(2x13 pin) 2 x USB 3.0 (2x10 pin)  
1 x RS-422/485 (1x4 pin, P=2.0) 4 x RS-232 (2x5 pin, P=2.54)  
2 x SATA 6Gb/s, 1 x SATA 3Gb/s (Intel® H81 supports AHCI, no RAID)
- ◆ Front Panel  
1 x Front panel (2x7 pin, Power LED, HDD LED, Speaker, Power Button, Reset Button)
- ◆ LAN LED  
2 x LAN LED (1x2 pin)
- ◆ Digital I/O  
1 x 8-bit digital I/O (2x5 pin)
- ◆ TPM  
1 x TPM (2x10 pin)
- ◆ SMBus  
1 x SMBus (1x4 pin)
- ◆ I²C  
1 x I²C (1x4 pin)
- ◆ Expansion  
1 x mSATA (SATA 3Gb/s)  
1 x PCIe Mini slot  
PCI and ISA signal via golden finger
- ◆ Watchdog Timer  
Software programmable supports 1~255 sec. system reset
- ◆ Fan Connector  
1 x CPU smart fan (1x4 pin)  
1 x System smart fan (1x3 pin)
- ◆ Power Supply  
5V/12V, AT/ATX support
- ◆ Power Consumption  
5V@3.4A, 12V@0.36A, Vcore\_12V@7.48A, 3.3V@1.42A, 5VSB@0.13A  
(Intel® Core™ i7-4770K 3.90 GHz CPU with 8GB (two 4GB) 1333MHz DDR3 memory)
- ◆ Operating Temperature: -20°C ~ 60°C
- ◆ Storage Temperature: -30°C ~ 70°C
- ◆ Operating Humidity: 10% ~ 95%, non-condensing
- ◆ Dimensions: 338 mm x 122 mm
- ◆ Weight: GW: 1000g / NW: 260g

## Features

- Full-size PICMG 1.0 with LGA1150 Intel® CPU
- Two 1600/1333 MHz DDR3 SDRAM DIMM slots support up to 16GB of memory
- Dual Intel® Gigabit Ethernet LAN controller
- SATA 6Gb/s and USB 3.0 supported
- IEI One Key Recovery solution for rapid OS backup and recovery
- TPM v1.2 hardware security function supported by TPM module
- Stiffener bars
- IEI jumper-less function

## Packing List

1 x WSB-H810 single board computer

2 x SATA cable

1 x QIG (Quick Installation Guide)

1 x One Key Recovery CD

1 x Utility CD

## Ordering Information

Part No.	Description
WSB-H810-R10	Full-size PICMG 1.0 CPU card supports LGA1150 Intel® Core™ i7/i5/i3, Pentium® and Celeron® CPU per Intel® H81, DDR3, VGA/iDP, Dual Intel GbE, USB 3.0, SATA 6Gb/s, PCIe Mini, mSATA, RS-232, HD Audio and RoHS
19800-000051-RS	Dual RS-232 cable, 230mm, P=2.54
19800-000075-RS	PS/2 KB/MS Y-cable with bracket, 220mm
19800-003100-100-RS	USB 2.0 cable, 300mm, P=2.54
19800-010500-200-RS	USB 3.0 cable with bracket, 457mm
32102-000100-200-RS	SATA power cable, MOLEX 5264-4P to SATA15P
32200-015100-RS	LPT flat cable, 280mm
32200-074800-RS	RS-422/485 cable, 200mm, P=2.0
AC-KIT-892HD-R10	7.1 channel HD Audio kit with Realtek ALC892 supports dual audio streams
CF-1150SB-R11	Special cooler kit for LGA1150, high-performance compatible, 65W
CF-1150SC-R20	Special cooler kit for LGA1150, 1U chassis compatible, 65W
CF-1150SE-R10	Special cooler kit for LGA1150, high-performance compatible, 95W
CF-1150SF-R10	Special cooler kit for LGA1150, high-performance compatible, 54W
DP-DP-R10	DisplayPort to DisplayPort converter board (for IEI iDP connector)
DP-DVI-R10	DisplayPort to DVI-D converter board (for IEI iDP connector)
DP-HDMI-R10	DisplayPort to HDMI converter board (for IEI iDP connector)
DP-LVDS-R10	DisplayPort to LVDS converter board (for IEI iDP connector)
DP-VGA-R10	DisplayPort to VGA converter board (for IEI iDP connector)
TPM-IN01-R11	20-pin Infineon TPM module, software management tool, firmware V3.17